

THE KELLY *Canvas*

Quarterly Fall 2018

artists collectors members sponsors patrons volunteers art lovers

NOW THROUGH JANUARY 3RD 2019

SHOWCASE

CENTRAL ALABAMA

Canvas

2018 Fall Quarterly Calendar

SHOWCASE

CENTRAL ALABAMA

Now Showing through January 3rd

Outdoor Alabama Exhibit



Ends November 13th

OCTOBER

Su	Mo	Tu	We	Th	Fr	Sa
	1	2	3	4	5	6
7	8	9	10	11	12	13
14	15	16	17	18	19	20
21	22	23	24	25	26	27
28	29	30	31	<i>Caravan</i>		

Board Meeting
October 9th/ 1:30pm-2:30pm



Lee Cooper - October 16
11:30 am - 1:00

Art on the Stage
6:30 Oct 25 @ The Depot Theater

Caravan Departs from Kelly
October 30 at 9:00 a.m.
for Garth show in Talladega



Art on the Stage
6:30 Oct 25th
Depot Theater

NOVEMBER

Exec. Committee Meeting Tuesday, November 13				1	2	3
4	5	6	7	8	9	10
11	12	13	14	15	16	17
18	19	20	21	22	23	24
25	26	27	28	29	30	

Public Artist Market
Saturday, Nov 17th



Phyllis Kennedy - November 20
11:30 am - 1:00



Members Only
Artist Market Party
November 16th

DECEMBER

						1
2	3	4	5	6	7	8
9	10	11	12	13	14	15
16	17	18	19	20	21	22
23	24	25	26	27	28	29
30	31					

Executive Committee Meeting
December 11th / 1:30pm-2:30pm

SHOWCASE

CENTRAL ALABAMA

Closes
January
Third

Eating from a Buffet or The Art of Buying Art by Barbara Davis p4 ➤

Are You Inspired? To shop? Libby J. Christensen previews *Première Autumn Art Mart* p6 ➤

Stitching the Past into the Present: C C Luck meets Wetumpka's *Thread My Needle Quilt Club* p8 ➤

Portrait of an Artist: Ken Lever by June Carpenter p12 ➤

Best of the Best: C C Luck covers *Central Alabama Showcase* awards p10 ➤

Art on Stage: C C Luck previews a unique artistic event between The Kelly and The Depot p14 ➤



Tuesdays with Kelly

Preview Fall events in Kelly's popular series of 'lunch & learn' series covered by C C Luck and Phyllis Kennedy:

Lee Cooper – October 16 p 15 ➤

Lee Cooper has travelled all over the world, but the country that stole her heart was Zimbabwe, its people and their art.

Phyllis Kennedy – November 20 p16 ➤

Phyllis covers the art of landscape architecture, presented by Phyllis Kennedy. Her topic of "Elmore County's Imprint on Central Park" will focus on the life and work of her younger brother Bruce Kelly who designed Strawberry Fields in NYC's Central Park.

Tuesdays with Kelly *Crossword Puzzle* **C C Luck** devises a test of what you've learned at TWK over the Summer. p17 ➤

THE KELLY Thanks Kelly volunteer Erin Rogers by Phyllis Kennedy p18 ➤

C C Luck reports on interdisciplinary meeting that asks *What can The Kelly do for art education?* p19 ➤

Caravan *The Kelly Caravan* heading to a fabulous two-artist show featuring Wetumpka's own Deb and Steve Garst reported by C C Luck. p20 ➤

Front Page: Art Deco leaf wallpaper inverted for Fall

Contributing writers: Barbara Davis, Libby J. Christensen, June Carpenter, C C Luck and Phyllis Kennedy.

Contributing photographers: Mitford A. Fontaine, Janice Howell, Libby J. Christensen and Carla Luck

Special thanks to Hope Brannon, who has all the answers. – David Luck, Editor

The Kelly Canvas is a quarterly newsletter of the Kelly Fitzpatrick Memorial Gallery – Carol Hickman, President



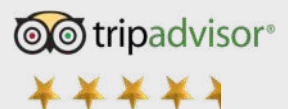
The Kelly Fitzpatrick Memorial Gallery
Second Floor - City of Wetumpka
Administrative Building
408 S. Main Street

334.567.5147

Open M-F / 8am - 4pm.

You're invited. Please join us.

Admission Free. Elevator accessible.



The Kelly Canvas is copyright © 2018 by Kelly Fitzpatrick Memorial Gallery. This publication contains copyrighted images and artwork subject to rights retained by their respective creators and owners. All rights reserved.

Eating from a Buffet or The Art of Buying Art

Ever been to one of those mega buffets? You know, the kind that just sort of seem to grow even while you're standing there. Those of us who live in the south are familiar with these places but an inexperienced outsider might find such a buffet a bit intimidating. Exposure to enough buffets can make you an expert at navigating the stations. The food choices illuminated under those acrylic domes or stainless steel teepees are numerous but we're very confident in what we like and we can even start with dessert rather than salad. It really doesn't matter what you choose or where you begin as long as you remember to do just one thing. USE A CLEAN PLATE for each repeat visit to the buffet. It's simple enough that anyone can become comfortable negotiating a buffet with just a little bit of preparation and exposure.



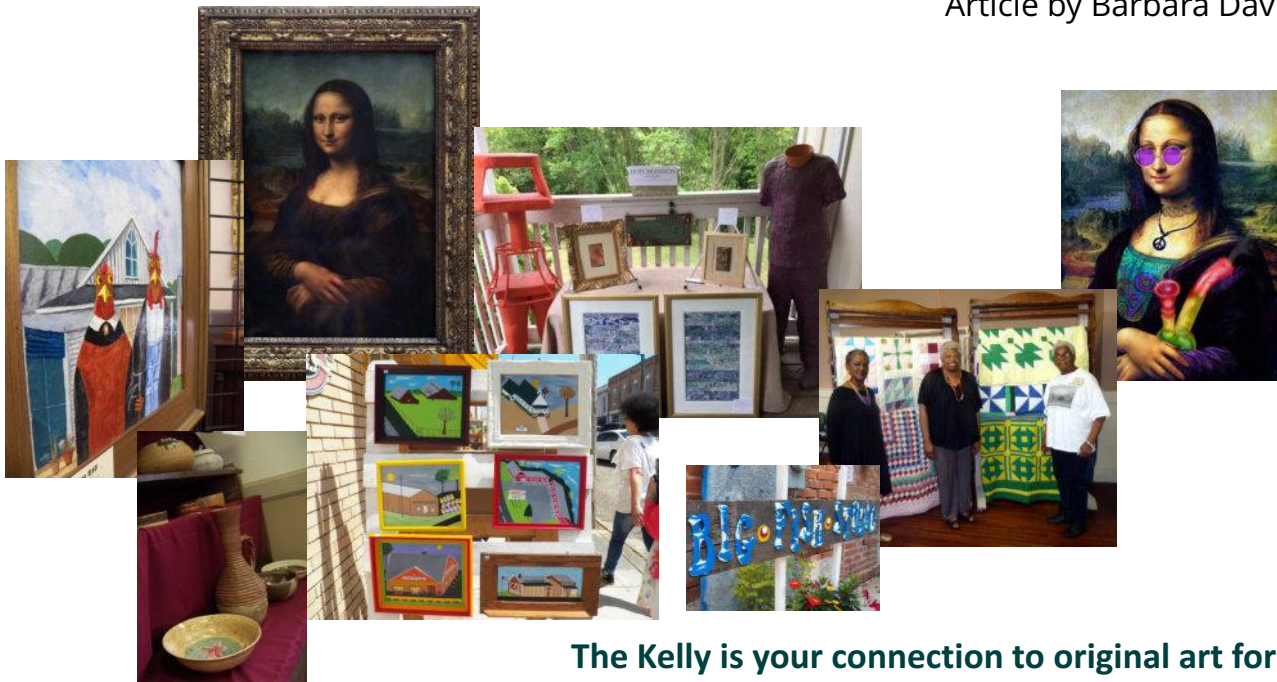
Buying art is a lot like eating from a buffet. The abundant choices can make it seem intimidating. As with a buffet, repetitive exposure to visual arts can hone your ability to navigate art choices assuredly. And, like a buffet, you really only need to remember one thing. **BUY WHAT YOU LIKE.** The process is simple enough that you can become comfortable with the *art of buying art* with just a little preparation. If you're more intimidated in the visual art world than in a culinary buffet line but would like to fill your home with works that inspire you every day, and might even impress a few guests, here are a few tips.

1. **Buy something you love.** Unequivocally this simple tip tops the list. The point of art is to evoke emotion so your gut reaction is telling and you should only select what makes you pause. Art experts in the River Region, as well as experts far and wide, unanimously agree that there should be an almost instant response to a piece of art you're interested in purchasing. If it stimulates you and you like it right off the bat, you'll still appreciate it in your home even if it doesn't match your sofa. A local artist shared that it should take no more than about 5 seconds to feel a connection to a piece that's right for you.
2. **Set a budget.** The key here is just to have one. Cost is always a factor so you need to know your budget before you start looking. Be specific and fairly fixed about what you have to spend but also know that you can buy art regardless of what your budget is. There's no lower limit on buying art. One collector described a painting purchased decades ago for \$25 at a beach art festival that remains one of her favorite pieces to this day. Don't approach collecting with the expectation of making money on your purchase. The real value of buying and collecting art comes from the enjoyment of having a great piece that you love in your home. If it increases in value someday, that simply adds a bonus to your enjoyment.
3. **Get the most bang for your buck.** Once you've decided how much money you have to spend, try and get as much as you can for that amount of money. You have a defined amount of space and money so if you have a choice, going with a bigger versus a smaller piece is a good choice for a new collector looking to get the most impact with a stand-out piece. It's acceptable to ask if the price of a piece is final and to inquire about the possibility of payment plans.
4. **Shop with intention.** Focus on a collection topic. The River Region is rich with collection variety

A vertical arrangement of five vintage license plates from various US states, including New York, New Jersey, Wisconsin, and New York, which together read "ART DOESN'T HAVE 2 MATCH THE COUCH". The plates are mounted on a light-colored, textured wall. The top plate is black with white text "ART" and "NEW YORK". The second plate is red with white text "DOESN'T" and "NEW YORK". The third plate is yellow with black text "HAVE 2" and "NEW JERSEY". The fourth plate is blue with white text "MATCH" and "WISCONSIN". The bottom plate is orange with black text "THE COUCH" and "NEW YORK".

6. **Buy something you love.** This is the first, last and most important thing to remember. Everything in between is simply noise if you don't love what you bought. Most experts believe that buying art for the investment value is the biggest mistake a collector can make. One local gallery owner sees art collectors as caregivers and believes that art belongs to the world and not to us as individuals. If a piece of artwork means something to you, that's what makes it invaluable. If you purchase a piece that drew you in immediately, it will continue to bring you happiness every time you see it.

Article by Barbara Davis



The Kelly is your connection to original art for sale.



Article by Libby Christensen

Event logo by Hope Brannon



Children's Harbor Lighthouse,
photo by Mit Fontaine.

you'll not only get first dibs on these unique pieces, but you'll receive a 10% discount on every sale (and yes, you can pay with debit/credit card as well as cash or check at a central cashier). There will even be volunteers to help you carry your precious finds to the car. What a shopping dream!

This special *Première Autumn Art Mart* is on Friday evening, but the doors will open again on Saturday, November 17, from 10-12 noon for any extra purchases, this time open to the general public. That means you can invite friends and neighbors to come (after you've had first pick yourself—just saying!) Both days you'll also get an opportunity to win multiple drawings for donated pieces—just ask Cookie Knotts what all she's collecting. She also has a group hand-crafting some cute *Nutcracker*-inspired ornaments you'll want to check out.

Meanwhile, our artists are at work on photography, pastels, and paintings. Traveler Libby Christensen has matted photos of Europe, the Mediterranean and even Russia as well as many of the Southwest, nature and local shots, and a few abstracts. Even though she has 10 international finalists awards, her prices start at just \$12 for a small matted print. Likewise, photographer Mit Fontaine has a range of stunning local shots available. This retired Marine lieutenant admits to being drawn to manly rusty vehicles and old wood and shadows, but he also captures gorgeous sunsets, sunrises and exquisite close-ups of birds.

Working in pastels, award-winning Kathy Atchison has some small framed pieces. Her passion is capturing images of people, but she has a variety of beautiful landscapes, some with



Painting by Emily Roney

Are You Inspired? To shop?

If you collect art or *wish* to collect art, you do not want to miss this. If you are drawn to

finely crafted objects, you could pick up a great buy. Are you possibly looking for unique Christmas or birthday presents? (There's always someone on the list who's "difficult," right?) This is your time and place: November 16, 6-8 p.m., at The Kelly's **Première Autumn Art Mart Members Only Party**.

Upstairs at the Administrative Center, imagine yourself enjoying music and conversation while you nibble on hors d'oeuvres and sip wine or beer. Downstairs will be filled with as many as 20 booths of fascinating and affordable art and hand-crafted items offered by some of our own Kelly members, who are donating part of the proceeds to The Kelly. As a Kelly member,



Bellagio Classic, photo by Libby Christensen.



4x6 sunset paintings by
Adelia Turner



Painting by
Shellie Whitfield

sensual misty scenes. Working in a much more liquid medium, Emily Roney uses a fluid acrylic to create swirling images, from space to peacocks to a very appealing octopus. Sunny Donaldson is selling some of her oils, as is Adelia Turner. Adelia says she has a lot of little 4"x6" pieces, generally acrylic landscapes and sunsets. Working with more abstract art is Nancy Cooper, who also has some "lake signs."

Shellie Whitfield usually sells from her own Big Fish Art Studio, but she's agreed to bring in some of her acrylic paintings. She explains that she uses her grandmother's silver butter knife to create a special impressionistic texture. Her grandmother also taught her to bead German Christmas spiders, which you need for your Christmas tree.

Kelly President Carol Hickman is also working on a variety of interesting wares. As an avid gardener, she has a special knack for painting exquisite florals. Not only does she paint in oil, acrylic and mixed media, but she's bringing log and blue jean sailboats and some prints of her wonderful Wetumpka bridge picture. Are you ready for one more unusual idea? She's also painting on pillows! Like Carol, watercolorist Donny Tomlin has a bunch of prints. He says he has painted almost all of the major buildings in Montgomery and Wetumpka (yes, the bridge, too!)

Paintings are not by any means the only art available. Stephen Cappelli and Robin Rogers both specialize in pottery. While Stephen has made a variety of prize-winning art pieces, Robin has mixed her functional pottery with real deer antlers. She has recently been doing raku firing, using horse hair and feathers for textural elements. Known for her different angels over the years, Robin loves to create crosses as well, which sell for just \$15-40. She may even have some nativity scenes.



Libby Christensen's
quilted collar.

One more artistic branch is quilting and sewing. Libby Christensen will have her original quilted Platter Pads—decorative quilts with thick cotton batting to be used in the kitchen—and quilted eye masks, perfect for stocking stuffers.

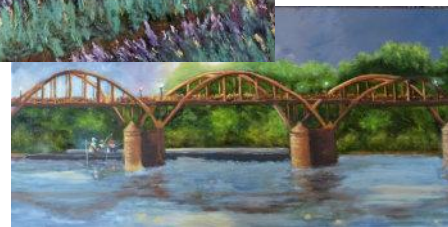
She plans to have a "Unique Boutique" of sewn and embroidered items—some hats, children's clothes, lace angels, and whatever else is homegrown in her sewing room during this next month or so. (Don't miss her

captivating vacuum cleaner cover!) She is even working on some teeny quilts for brooches and beading some bracelets, so there will be something for you if you love jewelry.

The **Artist Market at The Kelly** will definitely offer a true variety for all budgets and tastes, whether you want just a few stocking stuffers, some interesting gifts, or a striking new painting for your collection. More artists may be signing up other than those mentioned, so look for some surprises. The current Central Alabama Showcase display upstairs also includes over 100 art pieces for sale. This venue is a perfect opportunity to get into the spirit of the holidays or indulge in your own very particular passion for those items that are truly creative and unique. **Put it on your calendar!**



Field of Dreams,
oil by Carol
Hickman



Evening on the Coosa, oil and prints by
Carol Hickman.



Pottery by Robin Rogers





Thread My Needle

Quilt Club



*stitching the past
into the present*



Thread My Needle Quilt Club began meeting in Jackie Lacey's living room in 1997. Two years later, the Club was invited to move into the more spacious Black History Museum and has met there ever since.

It's a scorching summer day. Inside a cool, brick building, ladies bend over an immense quilting frame. Grandmothers, mothers, granddaughters, and friends of long standing stitch and talk, talk and stitch, as they tell the story of their group. This is the Thread My Needle Quilt Club (TMN), which meets in Wetumpka at the Black History Museum every Tuesday from 9:00 to 1:00.

On this particular Tuesday, Libby Christensen and I are visiting. Libby takes pictures and herself a fine quilter, swaps tips and techniques with the ladies. I listen and take notes and peruse a book documenting the group's history, including biographies and pictures of every single member, living and passed on. Answers to our questions—and more—come without their being asked.

In its heyday, TMN boasted 20 members, but it began modestly in 1997 with two newly retired ladies, Jackie Lacey and Jean Pinot, who were interested in crafting. Quilting captured their imagination, and the group—with all its members, frames, and supplies—soon outgrew Jackie's living room. As luck would have it, in 1999, Franzine Taylor, chair of the Black History Museum Committee, asked the group to begin meeting at the museum, so the facility could be open for tours. And there the group has met ever since.



The ladies seize opportunities to create one-of-a-kind quilts. They once fashioned a quilt from the clothes of a young man who died too soon. Another time they made a quilt that looked like a giant bingo card. A quilt honoring the group, featuring transferred photos of members, hangs in the museum. Right now TMN is brainstorming ideas for a quilt celebrating Wetumpka.



**Left to Right:
Club matriarchs Bessie Piner,
Mazell Townsend and Jackie
Lacey.**

Thread My Needle's generosity was recognized by The Alabama Black Heritage Council with the *Idella Childs Distinguished Service Award*.

While the group enjoys its own company and welcomes new members—just today there's a newcomer who wants to learn quilt preservation—it is generous with the community. It makes quilts for nursing homes in Wetumpka, participates in Black History Month celebrations, contributes regularly to the museum, visits classrooms, hosts schools' field trips, and itself takes field trips, including a memorable trek to the Quilts of Gee's Bend Exhibition in Mobile. The Alabama Black Heritage Council has recognized TMN's generosity with the Idella Childs Distinguished Service Award. *Southern Living* featured the club in April, 2004.



As other members arrive and seamlessly join the quilting, Libby and I tour the rooms of what was once the Elmore County Training School, built in 1924. Sylvia

Thompson—daughter of TMN's oldest member, Mazell Townsend—is our guide. We view paintings by Steve Mitchell, who painted scenes of Wetumpka. We see rooms brimming with artifacts from the everyday lives of the city's African Americans —antique bedsteads and desks and cheese graters and hats and irons and meat grinders. We pore over *Researching African American History in Alabama*, compiled and edited by Franzine Taylor. We leaf through a large collection of children's books commemorating prominent figures and landmark events in Black history. We see dozens of photographs from the days of Doby High School, spanning its years as a segregated school from 1963 through 1970, as Sylvia talks memories into life.

Article by C C Luck



Museum of Black History
202 Lancaster St., Wetumpka, AL 36092
334-567-5109 / Open Tues 9-1 and Sat 10-2



Desire to continue TMN reaches across generations.

After two hours, Libby and I say our goodbyes and leave the coolness of the museum to emerge back into the scorching day and our everyday lives. Inside, the ladies are still quilting together pieces of old clothes and patches of new fabric. They are stitching the past into the present. But it doesn't end there. As the club's book puts it, "Each has stated that it is their prayer and hope to continue to have a Thread My Needle group now and in the future."



The museum showcases art and artifacts that tell the history of Wetumpka's Black Community.



Left to Right: Quilters Martha Piner, Mary Livingston, Sharon Kimbrough, Sylvia Thompson, Bessie Piner, Mazell Townsend, Jackie Lacey and Felcia Torbert. *Southern Living* featured the club April, 2004.

Photos by Libby Christensen

SHOWCASE

CENTRAL ALABAMA

Best of the best now showing at the Kelly

Nine arts organizations in the region juried entries to their shows and submitted the best to the Kelly's *Central Alabama Showcase*. All of central Alabama has lots to brag about!



Winning artists celebrate at Kelly reception.



Award winners announced by Kelly President Carol Hickman.

Arts organizations in the region juried entries to their shows and submitted the best to the Kelly's *Central Alabama Showcase*. The following groups participated:

Art Quest Studio and Gallery
Artists Association of Central Alabama
Auburn Open Studio
Big Fish Art Studio
Central Alabama Artist Guild
Elmore County Art Guild
Montgomery Art Guild
Prattauga Art Guild
SAC's – Society of Arts and Crafts

These nine organizations entered more than 100 works of art by 37 painters, photographers, and sculptors. The task of judging was daunting, but Dr. Elliot Knight, deputy director of the Alabama State Council on the Arts, obliged.

Results were announced at a festive reception on September 18. Nada Boner, Kay Alkire Brummal, and Ladonna Idell took First, Second, and Third Prize, respectively. Honorable Mentions went to Hope Brannon, Edward Brummal, Kay Alkire Brummal, Libby Christensen, June Dean, Steve Duke, Elana Hagler, Enid Probst, and Rene Thompson. Sunny Donaldson took the People's Choice Award. SAC's Gallery won the Group Award—and bragging rights. Raven Thornton was the lucky winner of the drawing for Carol Hickman's *Bibb Graves Bridge*.

The *Central Alabama Showcase* will stay at The Kelly until January 3. Don't miss this opportunity to see the *best of the best*!

Article by C C Luck
Event logo by Hope Brannon

AWARDS Juror | Dr. Elliot Knight

1st Place | Nada Boner

2nd Place | Kay Alkire Brummal

3rd Place | Ladonna Idell

EXHIBITION SPONSORS

Alabama Power

Mr. and Mrs. Jerry Carpenter

Prime South Bank

Troy Stubbs, Chairman Elmore County Commission

The City of Wetumpka



SHOWCASE



1. Patron of the Arts Wanda Fontaine, Kowaliga, admires ceramic by First Place winner Nada Boner
2. Sunny Donaldson took home the Peoples Choice Award
3. Sponsors Chairman Elmore County Commission Troy Stubbs (left) and Wetumpka Mayor Jerry Willis at reception.
4. Larry Marbury, Alexander City, AACA, with his painting *Tripple Treat*.
5. Society of Arts and Crafts' Kay Brummal won Second Place. SAC's Gallery won the Group Award.
6. Kelly President Carol Hickman and Joanne Staley of the Montgomery Art Guild.
- 7 Artist YoKo Brockway, Auburn, with her piece, *Spring Dance*.
8. Raven Thornton was the lucky winner of the drawing for Carol Hickman's *Bibb Graves Bridge*.
9. June Dean, Honorable Mention
10. Amie, Evan and Olivia Harbin.

The Kelly Fitzpatrick Memorial Gallery presents . . .



Central Alabama Showcase.

Through January 3, 2019



408 South Main Street, Wetumpka, AL 36092

Open Monday - Friday, 8 - 4 | free to the public | art
available for purchase

Call: 334-567-5147

Web: thekelly.org | Email: thekelly36092@gmail.com

Portrait of an Artist: Ken Lever



Snail shell took about 15 hours of math and 200 hours to produce.

There is a new snail at The Kelly. The latest creation of artist Ken Lever, the Tulotoma snail is carved out of Alabama marble from Sylacauga and the intricate sculpture took 200 hours to produce. As an artist who has worked with wood and marble for the last 30 years, Ken stated that he has always been very methodical in his approach to his work and he calculates his plan of sculpting. The marble sculpture of the shell incorporated approximately 15 hours of math in the pre-production stage.

Ken also drew multiple scale illustrations to determine the ultimate dimensions of the carving. The completed figure is 22 inches tall and rests on a pedestal built by hand.

Early Inspiration

Ken graduated from Stanhope Elmore High School and currently lives in the River Region, but describes himself as an Air Force "brat." During his childhood, he traveled the world with his family from one military post to another, attending schools that integrated the arts into the academic curriculum. Ken's inspiration for art thrived as he attended innovative stateside schools to schools in Germany during his middle and high school years. Describing those formative years, he said, "I was more interested in drawing and painting at the time. The teachers really pushed the students to try new things, challenging them to become interested in creating."

Growing up in Germany with a father in the Air Force and an Italian mother, he gained much of his motivation from the culture while visiting German cathedrals and castles as well as Roman



Little Wing



Living the Dream

Ken's work began as a hobby, which led to giving his work as gifts, and then his works eventually found their way into a Montgomery gallery for a few years, but that experience did not have the best outcome. He then withdrew to determine what the next chapter would be.

He says, "It drives me crazy to not make stuff. I have to be in the studio creating."

He now has a website where he sells some smaller pieces and it is linked to social media. His works may also be found at the Lee and Paige Fine Art, a gallery in Columbus, Georgia, which opened its doors in March 2018. The owner was interested in Ken's unique pieces of art and sought him out for his collection.

The gallery took his entire inventory, will maintain it, and will rotate it for display. He is the only artist at the gallery featuring wood and stone three-dimensional creations.

Ken has won numerous awards, most recently, the 2018 Members Exhibition Award, Best in Show, from the Columbus Artists' Guild for his creation *Little Wing*. Additionally, his work can be seen on Tyler Perry's 2013 film, *Temptation: Confessions of a Marriage Counselor*, after being recruited by a friend to loan some art to the movie.

Article by June Carpenter

sculpture in Italy. "The life-sized sculptures always intrigued and fascinated me. It was eye-opening, and I was always in awe. I'm always challenging myself to push the boundaries of what is possible, not without quite a bit of failure, but that's essential to the creative process moving forward."



Arachnabowl



Art is a family affair for Ken Lever, his wife Kelly and their two daughters. The Levers live in Tallassee, Alabama.

The Sculpting Process: Wood and Marble

The traditional method of sculpting utilizes a chisel, but Ken uses a diamond blade to cut the excess stone off of the block marble, creating an initial shape of the composition. He then employs a variety of chisel heads in different sizes to create intricate details. Ken states that he is able to envision the end product. "I see the image in my head and have to cut everything else away. I'm not sure where that ability came from, but it's a skill I have." Ken often uses ideas of other artists as inspiration for a project and then he adds his signature technique for the creative outcome. Each work of art employs movement and contrast as important components.

"I think of my art as more like artistic schizophrenia. You can put ten of my pieces together and you would never guess that they all are mine. I like making pieces that are one of a kind every time and my ideas are drastically different," he says. Even though he strives for diversity in his creations, he does carve a signature trademark flower in the bottom of his woodwork. "The processes for both wood and marble sculpting are practically the same technique, just using different tools. The finishing step in both is sanding, which takes significantly more time with marble, as it is a much harder material. I have learned a lot from making mistakes along the way. Sometimes it's a good thing though because it becomes something else entirely. Growing up seeing the masterpieces I always assumed marble would be difficult to sculpt, but I was pleasantly surprised how easy it was to carve. I still learn from a lot of trial and error."



"I like making pieces that are one of a kind every time . . ."

The recurring theme in Ken Lever's life is evident: his time is spent in his studio planning and creating. The Tulotoma shell on display at The Kelly is the verification of his vision and insight. His hobby is becoming a vocation: "I've decided to pursue art on a more full-time basis. I'm just trying to live my dream."



THE KELLY

ART ON THE STAGE

6:30 Thursday, October 25 at the Depot Theater

A Very Special Celebration of the Arts

It's mid week. Life is a little humdrum. Maybe you could use some stimulation—drama, socializing, doing good. Rarely do we get a chance to accomplish all three at the same time.

Just such an opportunity presents itself with *Art on the Stage*—a unique collaboration between The Kelly and the Wetumpka Depot Players—on Thursday, October 25. The evening begins at the Depot Theater with a social hour at 6:30, followed by a drama. Lasting an hour, *The Diviners* by Jim Leonard Jr., is a “marvelously theatrical ... story of a disturbed young man and his friendship with a disenchanted preacher ... in the early 1930s” (samuelfrench.com). Afterward, playgoers will converse with the cast.

During the evening, a silent auction will offer select art for sale. To whet your artistic appetite, here is some of what will be available: two paintings by Mose T, something wonderful from Marcia Weber Art Objects, plus art by local artists.

Art on the Stage realizes a deep desire of The Kelly—to partner with community organizations in bringing new opportunities for engagement in the arts to the area. All proceeds will support future events at The Kelly and the Depot Theater. So, if you'd like to enjoy both performing and visual art, have stimulating conversation, get the chance to take home outstanding art of your own, and support local arts organizations, join us for *Art on the Stage*!

All this is available for \$25. To make your reservation, contact:

Belyn Richardson
334.328.0249

OR

Kathy Willis
334.301.2628

Belyn.r@gmail.com



Fall Events

Tuesdays with Kelly, October 16: LEE COOPER

Lee Cooper has travelled all over the world, but the country that stole her heart was Zimbabwe. More precisely, a group of boys at an orphanage in Harare captured her heart.

Before she became an Africaphile, Lee grew up in Montgomery and Birmingham, attended Agnes Scott College, and raised two children. In 2009, she retired from the shop she owned for 20 years, Town and Country Clothes, in Birmingham.

A long-time member of South Highland Presbyterian Church, Lee has served as chair of the Foreign Missions Committee and currently, is a serving elder. In 2007, she went on her first mission trip to Africa, visiting several countries. Impressed with Zimbabwe's potential, she returned in 2009—and met the boys of Lovemore Home. When the home closed and the boys were placed in foster homes and boarding schools, their welfare took on added urgency. Lee returned again and again, dealing with the powers-that-be in the Zimbabwe Presbytery, advocating for the boys' education, and just spending time with them. Among the boys, she is known as "Auntie (with an English accent) Lee."

Lee has visited Africa a total of 12 times and returned from her most recent trip in September. She brought trunks full of art from Zimbabwe, both contemporary folk art and fine art, including beaded sculpture and jewelry, fabric wall hangings, paintings, and masks. These trunks will come with her to Tuesdays With Kelly on October 16, when her talk will focus on Zimbabwean art.

If you're in the market for unique Christmas gifts, bring your wallet, because the contents of her trunks will be for sale! All proceeds will go toward educational support for Auntie Lee's Lovemore Boys.

Article by C C Luck



Lee Cooper



Traditional arts in Zimbabwe include pottery, basketry, textiles, jewelry and carving.

Tuesdays with Kelly

Lunch & Learn

Bring a bag lunch
We've got drinks and treats

Noon to 1 pm

Every third Tuesday of the
month, except December

Open to the Public

The Kelly is located on the second
floor,
City of Wetumpka Administrative
Building,
408 S. Main Street.

Admission Free. Elevator accessible.
Please join us.

Tuesdays with Kelly, November 20: PHYLLIS KENNEDY

November's Tuesday's with Kelly will feature a discussion of a different kind of art.....the art of landscape architecture, presented by Phyllis Kennedy. Her topic of "Elmore County's Imprint on Central Park" will focus on the life and work of her younger brother Bruce Kelly. Kelly is widely described as being a native Georgian but Kennedy will prove otherwise.



Phyllis Kelly Kennedy with babysitter, Robert Lykes, and brother Bruce.



Phyllis Kennedy

Kelly's private client list included such names as William Paley, Angier Biddle Duke, Sen. John Heinz and buy-out mogul Henry Kravis. But, he is most often recognized for his design of Strawberry Fields, the Central Park memorial to John Lennon.

Kelly collaborated with Yoko Ono, the Central Park Conservancy and city officials to create the 5.3 acre memorial park which is credited with rejuvenating Central Park and the City of New York. A plaque in Strawberry Fields that memorializes Kelly's efforts reads:

"IF YOU SEEK MY MONUMENT, LOOK AROUND YOU."

Article by Phyllis Kennedy

In July 1985, Bruce consults with Yoko Ono, Central Park administrator Betsy Rogers and commissioner Henry Stern an area that would become part of Strawberry Fields.



Bruce visiting Central Park in the 1970s



Iconic *Imagine* mosaic.



A park designed for all seasons.

Photographs by Sara Cedar Miller/Central Park Conservancy from her book *Strawberry Fields* except 1970s picture of Kelly (Ruth Orkin Archive) and family photo.

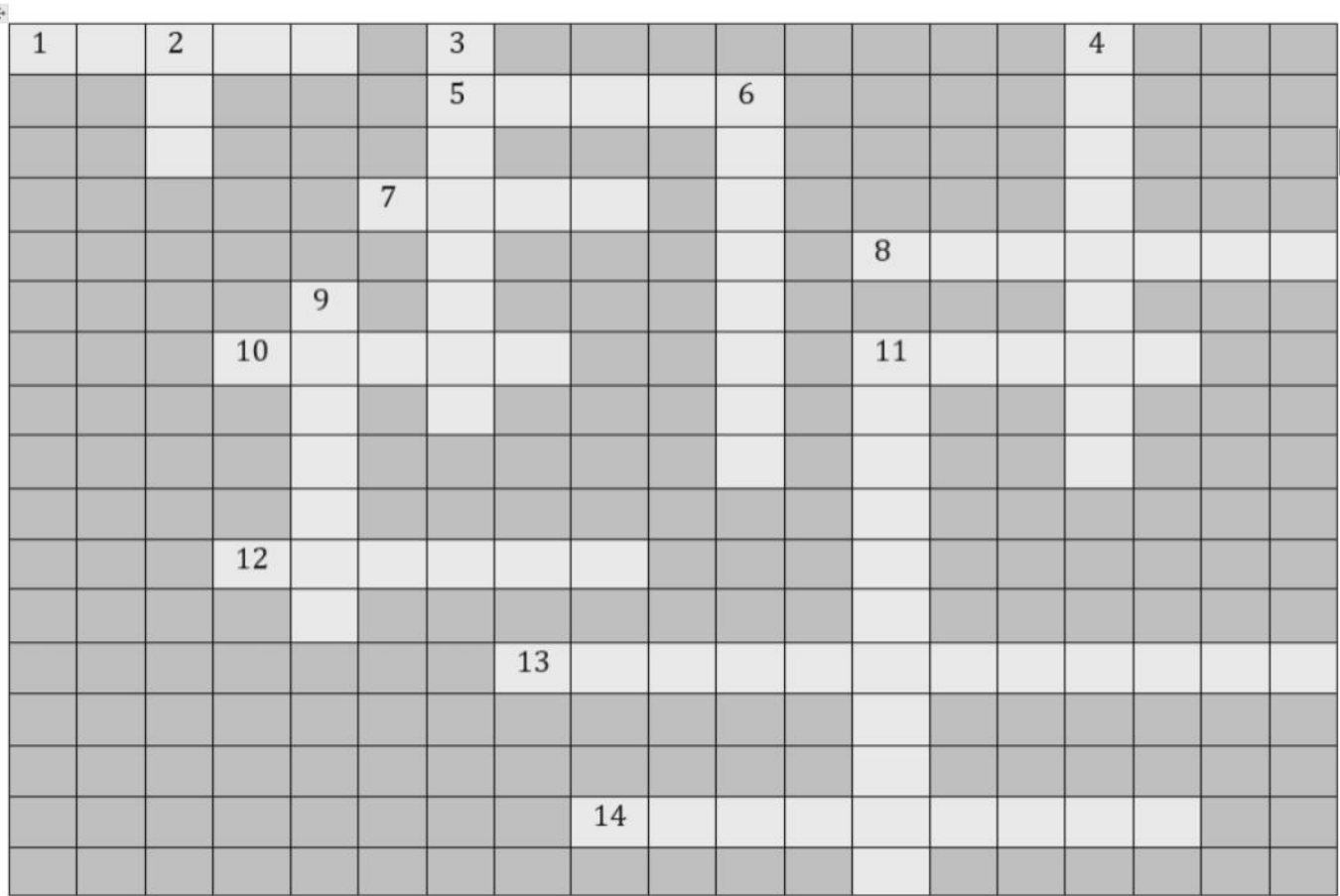


Crossword Puzzle

Devised by C C Luck

Tuesdays With Kelly over the last three months has been all about Alabama's rich art traditions. In July, Joey Brackner recounted our state's long history of pottery making.

In August, Marcia Weber enlightened us about contemporary folk art. In September, Elliot Knight took the long view of 200 years of art in Alabama. All three programs contained myriad fascinating facts. Let's see if you can recall some of them with this crossword puzzle.



ACROSS

1. ____ tended to make African and Native American pottery.
5. The more ____ a piece of pottery's shape, the earlier it was made.
7. Potters were attracted to AL for its rich ____ resources.
8. Jimmie Lee ____ represented AL at the Bicentennial in 1976.
10. Potters migrated from SC through ____ territory to central AL.
11. Contemporary folk artists often make art from ____ objects and materials.
12. The section of *AL Artists and Their Work* covering 1969-2019 features murals in ____.
13. An expanded *AL Artists and Their Work* will come out in spring 2019, just in time for AL's ____.

14. When Moretti, *Vulcan's* Italian sculptor, died, his family send his *Head of Christ*, made of ____ marble, to AL.

DOWN

1. ____ tended to make European style pottery.
1. Marcia Weber's relationship with Mose ____ sparked her passion for contemporary folk art.
1. Contemporary folk artists often start creating while convalescing from ____.
6. Elliot Knight is deputy ____ of the AL State Council on the Arts.
9. A painting by Bill ____, who was born a slave, recently sold for \$82,000.
11. ____, for whom KFMG is named, is featured in *AL Artists and Their Work*.

Answers ➡

THE KELLY Thanks Erin Rogers

Volunteers are the engine that drive all activities and events at The Kelly. None are more talented or dedicated than our 'Boss Hen' Erin Rogers.

Article by Phyllis Kennedy

As the saying goes, 'If you want something done, ask a busy person.' Better yet, ask a busy woman like Erin Rogers.

She has been the chair of the Receptions Committee of KFMG for the past year and has done a remarkable job. Erin has proven herself to be a "hostess with the mostest," planning innovative menus, instituting new procedures, and providing elegant events for all comers.

Erin is also active with children's activities at Trinity Episcopal Church. The Rogers family enjoys hunting, fishing, and camping, as well as cooking, history and travel.

A native of Sheffield and a graduate of Judson College in Marion, Erin worked for Lt. Governor Lucy Baxley's gubernatorial campaign before becoming a stay-at-home mom.

Her ability to plan and produce flawless parties is a bit unusual in someone of her age. When asked about that quality, she has a ready answer.

"I got it from my Mama..... well, in part from my Mama. My mother loves floral design, art and throwing parties. However, she does not love to cook. As a preteen, my mother would take me along when she was hosting parties with friends. I'd always end up in the kitchen with the caterer and co-hosts. I learned about timing everything so that all the food was ready at the same time and which foods complement each other.

One of my mother's friends was called 'Boss Hen.' If in doubt about anything, you called 'Boss Hen.' My nickname among my mom's friends has been 'Boss Hen in Training.' I still go home to help my mom whenever she throws a party. And, she's been to KFMG to help me!"

The Rogers feel incredibly blessed to live in the Elmore County community with rich resources of history, arts and recreation, plus a wonderful public school system. At The Kelly, we are incredibly blessed to have Erin as a volunteer and friend.



Photo: Mitford Fontaine

Erin and her husband Matt, a Sr. Vice President with First Community Bank, have three boys: Rutledge (10), Gaines (7), and preschooler Pearson. The whole family is involved in Scouting.



Events by Erin Rogers and her team are renowned for their relaxed elegance and attention to detail.



What Can KFMG Do For

Art Education?



Ideas flew fast at a meeting in the art room of Wetumpka High School on August 30. Led by Cookie Knott, co-chair of KFMG's Education Committee, the group of diverse stakeholders considered mutual goals for 2018-19 and teachers' wishes for their students. "What can The Kelly do for art education?" was the overarching question.

In attendance were Cookie; art teachers Adrienne Duvall, Shellie Whitfield, Marie Powell, and Mindy Buckley; Amy Passaretti, editor of *Elmore County Living*; Amalia Kortright, bureau chief of the *Wetumpka Herald*; Lee Hamilton, attorney with AEA; and Carol Hickman, president of The Kelly.

Among the ideas enthusiastically endorsed were:



programs by The Kelly that highlight making a living in art, with concrete guidance in how to assemble portfolios, write artists' bios, and prepare for professional shows;



film nights at KFMG, featuring such movies as *Loving Vincent*;



students volunteering at KFMG events at which they can earn required service hours; and



students' participation in KFMG's Artists' Market, November 16-17.

All these ideas are part and parcel of Wetumpka's thriving arts community—which includes the Elmore County Art Guild, originator and continuing director of the longstanding Sparking the Arts competition for schoolchildren; several clubs of art lovers and supporters; Thread My Needle Quilt Club; art galleries, including Marcia Weber Art Objects, newly relocated to Wetumpka; an art foundation; The Depot Theater; and, of course, The Kelly. All those attending applauded the goal of making Wetumpka an "arts destination." And everyone agreed that a crucial means achieving that goal is to involve young people at every opportunity!



Article by C C Luck

THE KELLY *Caravan* October 30th

Come join *The Kelly Caravan* heading to a fabulous two-artist show featuring Wetumpka's own Deb and Steve Garst.



This artist couple met in 2001 and became partners for life in 2004. Working in The Dog House Studio behind their home, Deb and Steve are the first husband and wife in the history of the International Society of Acrylic Painters to both be juried into the same exhibition and to receive Signature status at the same time.

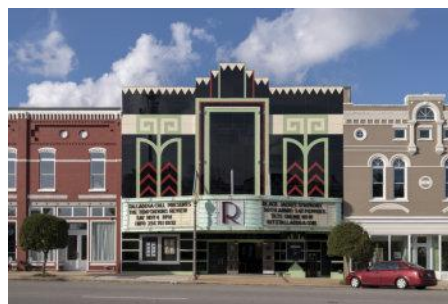
The outing will start at The Kelly on Tuesday, October 30, at 9:00 a.m. and then caravan to Jemison Carnegie Heritage Hall in Talladega. After viewing the exhibit, Kelly-ites will enjoy a Dutch-treat lunch and tour the Ritz Theatre. For more information, contact Janice Howell at 334.590.5699 or daring.47@gmail.com.

If you'd like a sneak peek at Deb's and Steve's art, visit garstart.com. Or you might like to take in the opening reception on Saturday, October 27, 4:00 – 6:30, when you'll get the opportunity to hear David Luck on guitar. The show is on exhibit from **October 27 through November 23.**



Jemison Carnegie Heritage Hall in Talladega
200 South St E, Talladega, AL 35160

Article by C C Luck



Talladega's historic Ritz Theatre

puzzle ➡

CROSSWORD PUZZLE ANSWERS

Across: 1. Women 5. ovoid 7. Clay 8. Sudduth 10. Creek 11. Found 12. Dothan 13. Bicentennial 14. Sylacauga

Down: 2. Men 3. Tolliver 4. Accidents 6. Director 9. Traylor 11. Fitzpatrick