

THE KELLY *Canvas*

Quarterly Winter 2019

artists collectors members sponsors patrons volunteers art lovers



Untitled color lithograph by Per Lergaard donated to The Kelly by Hope and Jimmy Brannon

2019 *Preview*

New exhibits at The Kelly this year



2019 Winter Calendar



Su	M	T	W	Th	F	Sa
January						
		1	2	3	4	5
6	7	8	9	10	11	12
13	14	15	16	17	18	19
20	21	22	23	24	25	26
27	28	29	30	31		
February						
					1	2
3	4	5	6	7	8	9
10	11	12	13	14	15	16
17	18	19	20	21	22	23
24	25	26	27	28		
March						
					1	2
3	4	5	6	7	8	9
10	11	12	13	14	15	16
17	18	19	20	21	22	23
24	25	26	27	28	29	30
31						

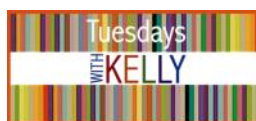
Board Meeting @1:30 pm | January 8th



Accepted Art Delivery | January 11, 2019 | 11 am - 12:30 pm

SHOW: January 14 - April 25, 2019

Reception | Tuesday, January 22, 2019



Tuesdays With Kelly | January 15

Behind-the-Scenes

Staging "Broader Horizons"



COOKIE KNOTT

more [▶](#)

Board Meeting @1:30 pm | February 12th



Tuesdays With Kelly | February 19

Keeping It Real

Art of Flower Arranging



MELANIE EVANS and AMY HIBBS

more [▶](#)

Board Meeting @1:30 pm | March 12th



Tuesdays With Kelly | March 19

Renaissance Man

Art Is My Passion



DR. ARTHUR BACON

more [▶](#)

Thanks to our hard-working volunteers and outreach programs, The Kelly exhibited works from **239** artists in 2018.



Quarterly | Winter 2019

- 2019 Exhibition Preview:** Canvas staff looks ahead to the coming year p4 [link ▶](#)
- Extend Your Horizons with the New Collections Exhibit** by LJ Christensen p7 [link ▶](#)
- Gallery Map:** Navigate the Kelly Galleries by Hope Brannon p6 [link ▶](#)
- The Dickinson Murals:** Influences on the the WPA-era artist explored by C C Luck p9 [link ▶](#)
- Case of the Wandering Painting:** A Kelly Connection by June Carpenter p13 [link ▶](#)
- Portrait of an Artist: Genie Kline** by June Carpenter p15 [link ▶](#)
- On the Road:** Kelly Caravan visits Deb and Steve Garst show by LJ Christensen p17 [link ▶](#)
- Artists' Market and Membership Party** by Barbara Davis p19 [link ▶](#)
- One 'Divining' Evening:** The Kelly and Depot Theater event by LJ Christensen p20 [link ▶](#)
- Tuesdays with Kelly Winter Events** by C C Luck p22 [link ▶](#)

Tuesdays With Kelly | January 15

Behind-the-Scenes

Staging "Broader Horizons"

COOKIE KNOTT

[link ▶](#)

Tuesdays With Kelly | February 19

Keeping It Real

Art of Flower Arranging

MELANIE EVANS and AMY HIBBS

[link ▶](#)

Tuesdays With Kelly | March 19

Renaissance Man

Art Is My Passion

DR. ARTHUR BACON

[link ▶](#)

The Kelly Insider latest news from 'inside' the KFMG from the Canvas staff. p25 [link ▶](#)

Cover Art: The untitled color lithograph by Per Lergaard, donated to the Kelly by Hope and Jimmy Brannon, is from the KFMG's permanent collection.

Contributing writers: Barbara Davis, Libby J. Christensen, June Carpenter and C C Luck **Contributing photographers:** Mitford A. Fontaine, Janice Howell, Libby J. Christensen and C C Luck **Managing Editor:** C C Luck **Editor:** D. Luck **Special thanks** to Hope Brannon for guidance and terrific events graphics.

The Kelly Canvas is a quarterly publication of the Kelly Fitzpatrick Memorial Gallery – Carol Hickman, President

As we pass the Canvas production baton over to Libby Christensen and Jeff Royal, our thanks to everyone who has contributed so mightily to the newsletter's inaugural year. We look forward to reading Libby and Jeff's work. They are a great team and we are all fortunate to have them carry on. - David and Carla Luck



The Kelly Fitzpatrick Memorial Gallery
Second Floor - City of Wetumpka
Administrative Building
408 S. Main Street

334.567.5147

Open M-F / 8am - 4pm.

You're invited. Please join us.

Admission Free. Elevator accessible.



The Kelly Canvas is copyright © 2019 by Kelly Fitzpatrick Memorial Gallery. This publication contains copyrighted images and artwork subject to rights retained by their respective creators and owners. All rights reserved.

2019 Preview



Writers inspire artists. Artists inspire writers. Their collaboration elevates works of both art and literature. *Visions and Voices* partners Southeastern Alabama poets, short-story and prose writers with artists in all media to produce innovative art and fresh ideas.



AUM Salon 2019



July 1 – September 30, 2019

Reception | Tuesday, September 10, 2019

Coming this year at The Kelly

BROADER HORIZONS COLLECTORS & CREATORS EXPLORING OUR WORLD

January 14 – April 25, 2019

Reception | Tuesday, January 22, 2019

Travel the world through artists' eyes, as *Broader Horizons* transports you to places and people around the USA and abroad. Visit indigenous cultures and communities, their livelihoods and cuisine. Share their celebrations and struggles. The exhibit promises to be a grand tour for hearts and minds.

southeastern *Visions and Voices*

Featuring Emerging, Established and Professional Artists & Writers

April 30 – June 26, 2019

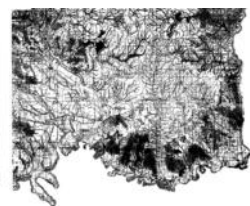
Reception | Tuesday, May 7, 2019

Auburn University Montgomery and The Kelly are partnering to present artworks by AUM art students, art alumni, and current and former art faculty. Participants are invited to display work in any media. *AUM Salon 2019* is an opportunity to view new art. For some, the exhibit will be a reunion. Everyone will experience new art and make new contacts and friends from the art network of AUM.

Cultures, Crossroads & Communities of Elmore County

October 7 – December 20, 2019

Reception | Tuesday, October 8, 2019



Kelly's Riverview Gallery presents a 'yesterday, today and tomorrow' view of Elmore County. Showing works ranging from abstract to realistic art, *Cultures, Crossroads and Communities of Elmore County* will display fresh ideas about our history, cultures, peoples and places. It is an opportunity to learn about our rich past and examine where we are today and our aspirations for the future.



MONTHLY ONLINE EXHIBITS | APRIL – DECEMBER, 2019

The Treasure Hunt: Part 1 | Landscapes, Waterscapes and Cityscapes | Due April 26
 The Treasure Hunt: Part 2 | Drawings | Due May 31
 The Treasure Hunt: Part 3 | Architecture | Due June 28
 The Treasure Hunt: Part 4 | Portraits | Due July 26
 The Treasure Hunt: Part 5 | Still Life | Due August 30
 The Treasure Hunt: Part 6 | Nature: Flora & Fauna | Due September 27
 The Treasure Hunt: Part 7 | Whimsy, Fantasy & Imagination | Due October 25
 The Treasure Hunt: Part 8 | *You Name It!* Open to any category not listed. | Due November 22

Artists... You, your talents and time are among our greatest treasures and we would like to toot your horn! The Kelly is seeking member artists to participate in a year-long series of online exhibitions focusing on specific subject matters. Work may range from realism to abstraction and all media and genres are welcome. Artists must *be or become* a member of The Kelly and agree to participate in a minimum of four Treasure Hunts. You may participate in all eight hunts, if you wish. Works submitted must NOT have been exhibited in the Central Alabama region prior to each Treasure Hunt due date.

Under each image we will provide a link to the work selected for our website where more specific information may be available. We also can provide biographies and specific comments regarding the work. In keeping with our goals, we will select a wide sample of techniques in order to open up our inventory to the broader public.

The culmination of this year-long effort will be a **physical exhibition**, plus an **online catalog during 2020**. Works selected for the physical exhibition may be NFS or For Sale and you have the opportunity to let people know that commissions are accepted. When a submitted work sells during the 2019 year, please make arrangements with the purchaser to borrow the work (if selected for the physical exhibition) from January through April of 2020. If you have any questions, please contact us at 334.567.5147.

Plein Air Workshop and Tulotoma Art Trail

April 25 & 26, Gold Star Park will host a **Plein Air Work Shop** taught by Alabama's famous Plein Air painter and teacher, Perry Austin.

April 27, 2019, artists will set up their booths down town for the **Tulotoma Art Trail**. We will have live music in the Alley Way as well as steampunk* demonstrations and contest in Merchants Alley. The highly anticipated event is unique among the city's festivals.



Plein Air Workshop – April 25 & 26
Tulotoma Art Trail – April 27

*Wikipedia says: "Steampunk refers to any of the artistic styles, clothing fashions, or subcultures that have developed from the aesthetics of steampunk fiction, Victorian-era fiction, art nouveau design, and films from the mid-20th century.



AL200: Making Alabama

Alabama Humanities Foundation Traveling Exhibition

Making Alabama. A Bicentennial Traveling Exhibit is making headlines throughout the state as it continues its trek through Alabama, stopping in all 67 counties before its grand finale in December 2019. Presented by Alabama Humanities Foundation with support from Alabama Bicentennial Commission and Alabama Department of Archives and History, it is being met with local innovative exhibits and activities from host communities that have put their unmistakable signature on the 200th birthday of Alabama's becoming a state.

The Kelly Reception: Tuesday, October 8, 2019
Happy 200th Birthday to Us!



2019



Preview...

Saturday, November 23rd

The Kelly will usher in the 2019 holiday season with its second annual Artists' Market to be held November 23rd at the museum. It is another great sales opportunity for Kelly artists. Last year's event featured beautiful acrylics, watercolors, photographs, pottery, crocheted items, handmade clothing, jewelry, pillows, notecards, and even paintings on wood. It's never too early for artists to start creating items for this popular event.

ARTIST'S MARKET



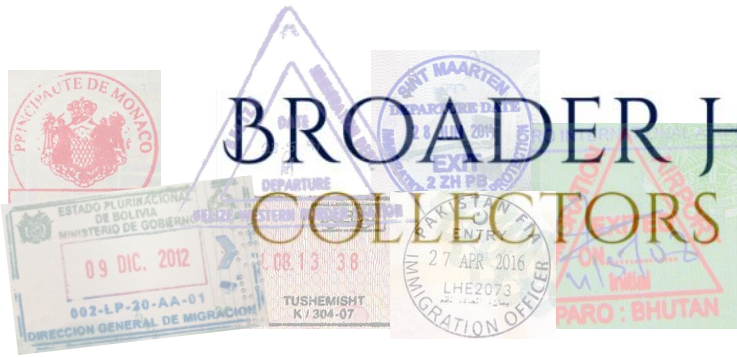
[◀ return TOC](#)

THE KELLY Galleries

Gallery Map by Hope Brannon



[◀ return TOC](#)



BROADER HORIZONS

COLLECTORS & CREATORS

EXPLORING OUR WORLD

Jan 14 - Apr 25



Extend Your Horizons with *the New Collections Exhibit*

by Libby Christensen

With the beginning of the new year, The Kelly is exhibiting works from collectors once again. This time, the art widens the horizons to overseas, from Russia and China to the Mediterranean, and North to South America, from oil paintings and photography to a quilt and silk rugs.

Likewise, the exhibit broadens horizons by including the amusing and imaginative primitive folk art of Mose Tolliver in contrast with the more sophisticated offerings. Some of the wonderful Mose T paintings donated to the Kelly Fitzgpatrick Memorial Gallery by board member Ron Drinkard will be on display along with the collectors' works and creators' works by Kelly members inspired by international themes.



Greek painting from Carol Ballard's collection

Carol Ballard is contributing a large variety of art, such as a couple of Russian paintings, several dramatic panels by a Greek artist, and a quirky painting in Incan style. Look for the painting that includes bugs, fish, frogs, and...what else can you find in the trees? She says it's one of her favorites, which is a huge compliment from this former Curator of the Winton Blount Collection and former buyer for Christie's Auction House of international fame. Contributing many other paintings right from the walls in her house, such as *Lake Como* and two others by William Berra, she is also allowing us to enjoy two handmade silk rugs. One is from Kashgar, China (near Afghanistan) where her husband bought it directly from the maker, who must have spent years on it.



Russian painting from Carol Ballard's collection



Pesto del Sol by Tom Francis (in style of Incan art)

Another piece perhaps from Afghanistan, or maybe Saudi Arabia, belongs to Genie and Bob Kline.

According to a friend who visited their house often, it looks like a thumb.

He didn't realize what it was for over two years. Try to find it and guess what it really is. Cindy Beumer has contributed many pieces, too, along with about 50 other members, to give us a broad look around the world.



Mediterranean Memories by LJ Christensen

Extend Your Horizons continues . . .

We also have many of our own artists. According to Kelly President Carol Hickman, there are about 40 creators for this exhibit. Kathy Atchison contributes some of her pastels and Wayne, her husband, does brilliant photos, with content this time from the Southwest, which is certainly a different culture. Besides his Native American photos, he has one that just might be extra-terrestrial. Can you name its place in the universe?



Overlooking the Kremlin
by LJ Christensen

Libby Christensen shows photos from her nine years' living in Europe and travels, such as a trip to Moscow, where a man was listening to the American tourists as they were *Overlooking the Kremlin*. This photo was an international finalist in *Best of Photography Annual* 1989. As a quilter, she also combined dozens of her Greek, Turkish and Italian photos into a photo quilt commemorating a surprise Mediterranean cruise she and her husband gifted his mother on her 65th birthday. Look for the Ottoman throne (the hint is in the name). Just as Libby loves her photos of Greek ruins and Venice, Carol Hickman loves to paint Italian vistas and flowers and will have some of her beautiful pieces on exhibit.

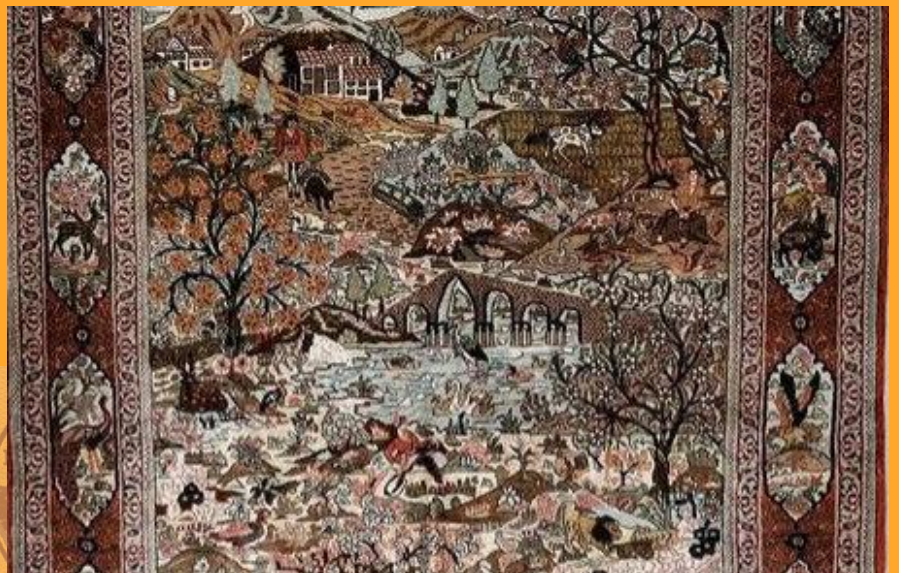


Sun Rise Colors by Wayne Atchison

This preview represents just a tiny fraction of the many wonderful pieces of art available to the public from **Jan 14 - Apr 25**, Mon-Fri, 8-4 p.m., in The Kelly Gallery, 408 S. Main St. in Wetumpka. The reception is on the evening of Jan. 22. Do not miss this one: "Broader Horizons: Collectors and Creators - Also featuring The Ron Drinkard Collection." It'll expand your mind or at least encourage you to update your passport!



Beggar Woman (Cinque Terre, Italy)
by cc Luck



Detail from handmade Chinese silk Rug
from Carol Ballard's collection





SETTLERS OF ALABAMA ~ 1820

THE DICKINSON MURALS

by C C Luck

There's a story on the walls of Wetumpka High School's library—a story of Alabama's early history told in four murals depicting scenes from the state's settling, starting in 1540 and ending in 1820. Altogether, the murals measure 328 square feet. They are magnificent, yet decaying as time takes its toll.

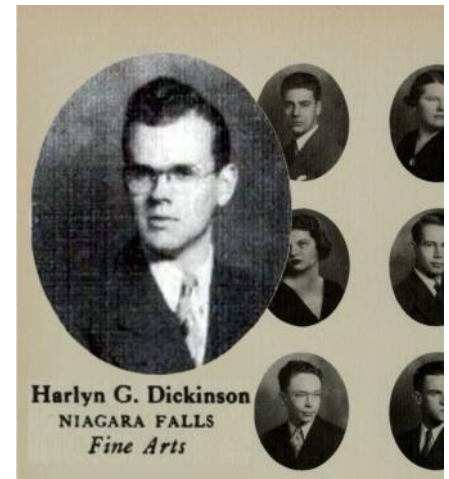
When viewing the murals, your perspective is distorted from craning your neck to look at them high on the walls. Colors have dulled, grime has accumulated, and paint is peeling. Even so, it's easy to imagine how vibrant and dramatic these murals were when completed 66 years ago and hung in the old post library at Maxwell Field.

We know some basic facts about the murals, but questions remain. In 1942, a young man named Harlyn Grout Dickinson, Jr.—standing 5 feet 9 inches, weighing 141 pounds—had enlisted as a private in the Army Air Corps. He was stationed far from his home in upstate New York at Maxwell, where he served as staff artist for *Tailwind*, the base newspaper. While doing this job, he found time to design and paint the murals. *Did he paint them all by himself?* In all likelihood, no. He probably worked with a team of artists.

The four murals, which were conceived to be part of a series of eight, were hung at Maxwell's old post library until it was demolished in 1961. *What happened to the other four?* Maybe all eight murals were completed, but four did not survive. Or perhaps there were never more than four; work may have halted when Dickinson was sent to World War II.

For sure, Dickinson's military service interrupted a promising career as an artist. He earned a B.F.A. from Syracuse University and went on to study at the Art Students League of New York and the State University of Iowa with prominent artists. The young Dickinson had several exhibitions and was granted a fellowship for foreign study, but apparently was unable to benefit from the award because of the war. *From Maxwell, to which arena of the war was he deployed?*

Upon returning from the war, Dickinson enjoyed a successful career as an illustrator of children's books, including *Thunder and Jerry – Horse Story* (1949), *Chewing Gum Trees* (1950), and *Round and Round and Round They Go* (1952). Beyond his work in illustration and brief entries in directories of American artists, the trail runs cold. *What happened to Harlyn Dickinson?* One website declares him to be “active” and living in New York, which would make him 102 years old. Further sleuthing, however, reveals that our Harlyn Grout Dickinson died in 1974 at age 57.



Dickinson was 22 when he posed for his 1938 Syracuse University Yearbook photo.

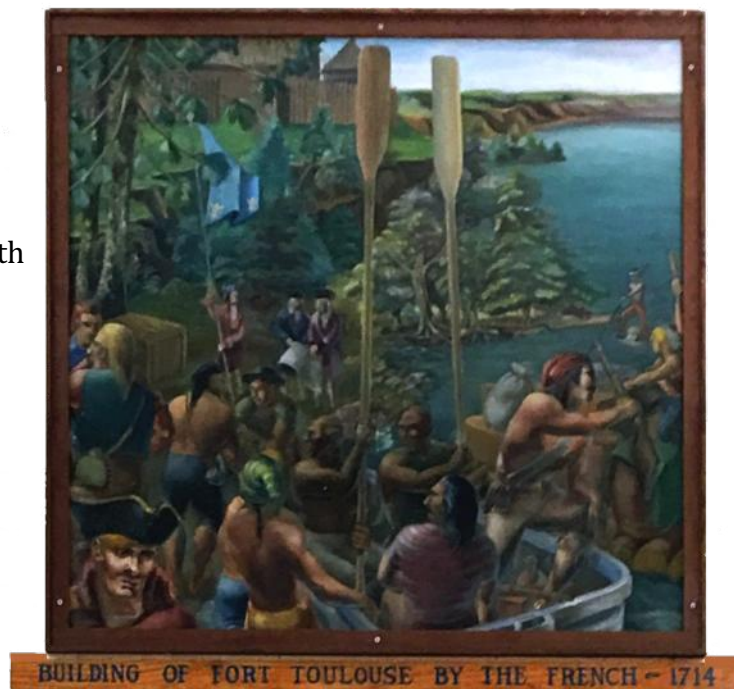


Students lounge beneath *Meeting of Hernando Desoto and Tuscaloosa-Choctaw Chief-1540*



What we know of Dickinson's story is sketchy—but his work remains. The four murals now at Wetumpka High School (WHS) suggest the workings of an artistic mind. They tell us that Dickinson was an artist of his time. Like many other murals of the WPA era (1935-43), his murals portray scenes both heroic and mundane, teeming with humanity, full of rounded figures rendered in rich color. Echoes of Italian Renaissance painting resonate throughout.

Even before the WPA, American artists were enamored with this voluptuous style of mural making. Two such artists were Jon Corbino, with whom Dickinson studied at the Art Students League of New York, and Philip Guston, with whom he studied at the State University of Iowa. Many of Corbino's canvases were gigantic, depicting scenes of both heroic struggle and everyday drama. Art periodicals spotlighted his work, which was described in feature articles in the *New York Times*, *Esquire*, *Time*, and *Life* as "turbulent," "violent, brilliantly colored," "exuberant," "vibrant," "ebullient," and as rich in color as Venetian paintings. The website, artsy.net, credits Corbino with capturing "the Depression-era zeitgeist."



Like many other murals of the WPA era (1935-43), Dickinson's echo Italian Renaissance painting.

Philip Guston, too, captured the spirit of the Depression era. At the formative age of 21, he and two fellow artists travelled to Mexico, where they met Diego Rivera, the best known member of the Mexican Muralism school. While there, Guston and his collaborators painted a 1,000-foot mural. Upon viewing the completed work, David Siqueiros, another prominent muralist, pronounced the three young artists "the most promising painters in either the U.S. or Mexico." By the time he was 22, Guston had already collaborated in painting three murals of tumultuous scenes—gargantuan and brilliantly colored. He would go on to become a WPA artist in New York, painting several more murals, often with his wife, Musa McKim.

Guston's style would morph over time. In 1941, though, when he encountered Harlyn Dickinson as a student, his career as a prolific muralist was in full swing. His painting aesthetic—a convergence of the Italian Renaissance, Mexican Muralism, and also American Regionalism—was fully formed, at least for a time. Together, Guston and Corbino likely would have exerted strong influences on the young Dickinson at an especially formative time of his development. And thus his teachers' artistic sensibilities, so in sync with the Depression era, are reflected in Dickinson's four murals, which hung in the old post library at Maxwell for almost two decades.

So how did the murals end up at Wetumpka High School? As with Dickinson's story, details are scant. We know that Maxwell's old post library was demolished in 1961 and in 1964, Elmore County Superintendent of Education Ross McQueen accomplished their transfer to the auditorium of the previous WHS, a WPA project on West Tallassee St. Where were the murals from 1961 to 1964? What was their condition? How did Superintendent McQueen get them? Was it an easy matter, or did he have to wrangle?

For almost half a century, they remained at the old high school, renamed the Wetumpka Performing Arts Center in the late 1900s. Six or seven years ago, the murals appeared in the library at the current WHS on Coosa River Pkwy. Who decided to move them? Why was it deemed necessary to transfer the murals? What was their condition? It is "certainly evident" that "there have been no restorations," according to WHS art teacher, Adriane Duvall. What are prospects for restoring the murals?



For nearly half a century, the murals remained at the old high school, now the Wetumpka Performing Arts Center .

Questions proliferate. But hope for learning the full story of Harlyn Dickinson and his murals is not lost. More information, if it comes available, may appear in *The Kelly Canvas*. And starting January 17, the Dixie Art Colony Foundation will sponsor a series of programs focusing on artwork of the WPA/Federal Art Project in Alabama—including the murals at WHS and connections to the Dixie Art Colony. For more information, visit dixieartcolony.org and its notices announcing January's Lunch and Learn. Stay tuned!



SURRENDER OF WEATHERFORD - Creek Indian - TO ANDREW JACKSON - 1814

Surrender of Weatherford - Creek Indian-to Andrew Jackson-1814

Sources and Acknowledgements

Thank you to all the people who pointed me in the right direction and provided valuable information: Current and past employees of Elmore County Schools - Jean Czerpak, Richard Dennis, Adriane Duvall, Ginger Wright; Maxwell AFB - Robert Kane, Air University Historian; Hope Brannon, Jackie Dean, Jackie Ernest.

Websites

americanart.si.edu	googleimages.com
ancestry.com	joncorbino.org
archives.gov	locateancestors.com
archives.nysed.gov	sothebys.com
artsy.net	wikipedia.org
askart.com	wpamurals.com
christies.com	
dixieartcolony.org	
encyclopediaofalabama.org	

Other

Falk, Peter H. (1999). *Who Was Who in American Art: 1564-1975*. Madison, CT: Sound View Press, p. 912.

Harris, Mark. (2014). *The Murals of Harlyn Grout Dickinson*. Wetumpka, AL.

O'Conner, John. (1941). *Directions in American Painting* (exhibition catalog). Carnegie Institute.

Taylor, Kevin. (5 July 2014). Gallery Members Seek to Have Murals Moved to Civic Center. Wetumpka, AL: *The Wetumpka Herald*.

Thomas, Billy. (3 January 1964). Maxwell Turns Over Murals for Wetumpka High Display. Montgomery, AL: *Montgomery Advertiser*.



Image from "Kelly Resting at The Dixie Colony, 1941"
Watercolor by Mildred Nungaster Wolfe / KFMG Permanent Collection

Kelly Fitzpatrick

Connections

Case of the Wandering Painting

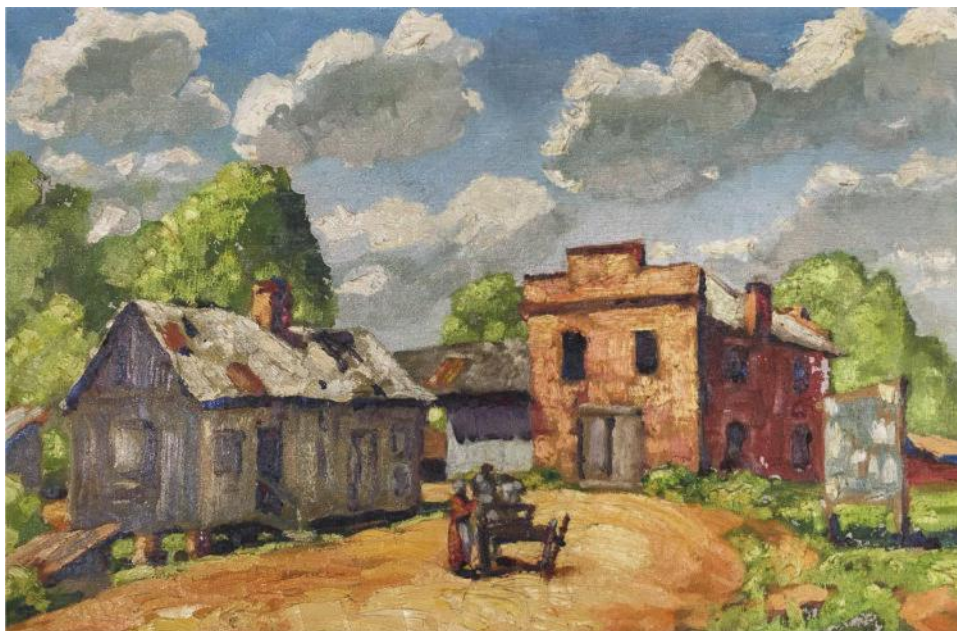
by June Carpenter

The Kelly recently received an untitled Kelly Fitzpatrick painting depicting an old warehouse which was donated by Wetumpka High School.

The picturesque canvas illustrates the surrounding property of the old warehouse, which currently houses the Wharf Street Rumbling Water Studios and Gallery near Gold Star Park, leading to the Ready Street boat landing. The building is the oldest business house in Wetumpka and was first used as a Native American trading post, setting the stage for a colorful history. It later became the site of the mule trading business of Mr. O. C. McCullers, grandfather of my husband, Jerry Carpenter.

Mr. McCullers expanded his business and built a metal barn to house more animals. Later, local veterinarian, Dr. George Washington, used the brick warehouse for his clinic and my father, Mr. Aubrey Evans, Elmore County Gulf Oil Distributor, rented the metal building to secure his gasoline delivery trucks. In the eighties, the brick warehouse was used for the Elmore County Museum and the metal building became the local re-cycling center until it was demolished. The brick building was restored and is adjacent to the Jeanette Barrett Civic Room.

When Kelly Fitzpatrick painted the scene, it featured a small house in the foreground with a wagon in front. Mrs. Dorothy McCullers Carpenter, daughter of Mr. O. C. McCullers, remembers that the house belonged to an African American woman known as "Mrs. Bits," who appears in the painting standing at the wagon. The last name of "Mrs. Bits" remains unknown and, after she passed away, her house gave way to the construction of the metal barn. The old warehouse is prominently featured in the right half of the vivid painting.



Although Kelly Fitzpatrick left the painting without a title, over the years it has become known as "The Old Warehouse." "Mrs. Bits" appears in the painting standing at the wagon in front of her house.

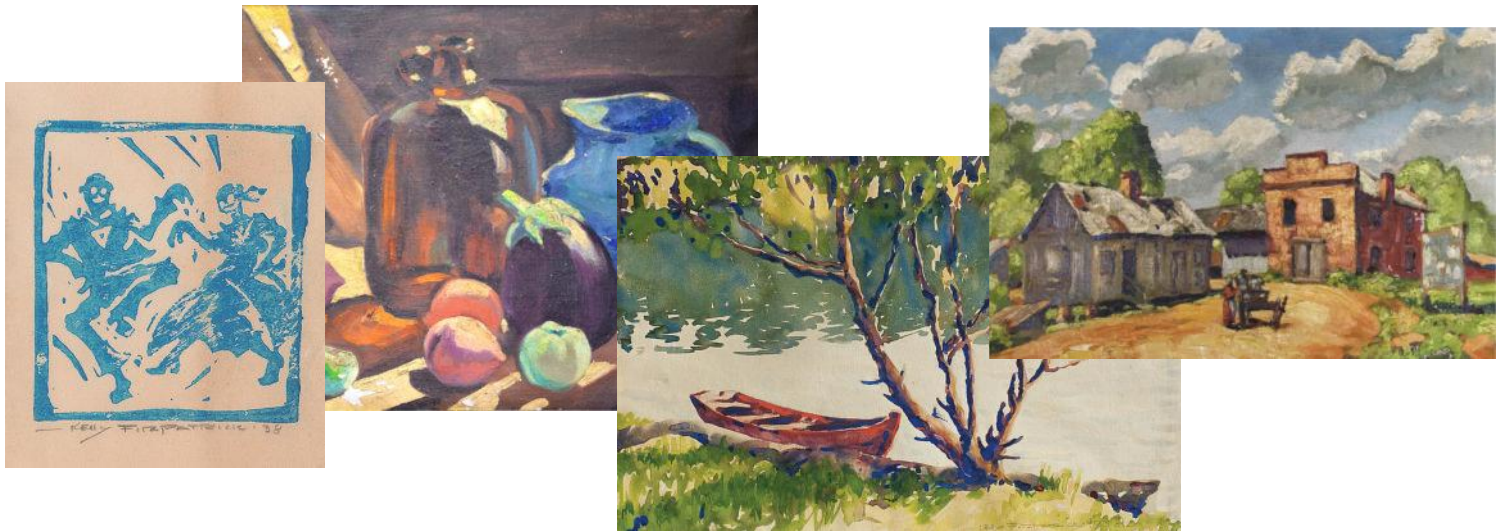
Kelly Connections continue . . .

When the Wetumpka High School (WHS) was built in 1939 at the corner of Tallassee and Alabama Streets, the painting was displayed in the entrance foyer where the senior high and junior high halls met. It graced the hall of WHS until 1974, when Mrs. Mary Greenwood Williams retired after 30 years of teaching. She had served as the senior class sponsor for many years and served in a number of capacities: yearbook sponsor, National Honor Society sponsor, senior English teacher and the coordinator of graduation ceremonies, to name a few.

Mrs. Williams was offered her choice of a memento from the school as an appreciation gift and she chose the painting of *The Old Warehouse*. It remained in her home until her death in 1996. Afterwards, the canvas was returned to the Wetumpka High School, which had been relocated to a newer facility on the Coosa River Parkway, but, instead of being placed on display, the painting was stored.

In 2012 and 2013, there were alumni interested in locating the painting and they checked with the administrators at WHS. One person requested permission to photograph the picture and two others asked if they were interested in selling it. From those conversations, it was apparent that the high school administrators did not realize that it was a Kelly Fitzpatrick painting, which explains why it had been stored instead of on display.

It remained in the offices of the Wetumpka High School until it was donated to the Kelly Fitzpatrick Memorial Gallery in the fall of 2018. *The Old Warehouse* is now joins The Kelly's permanent collection where it is displayed prominently for all to enjoy.



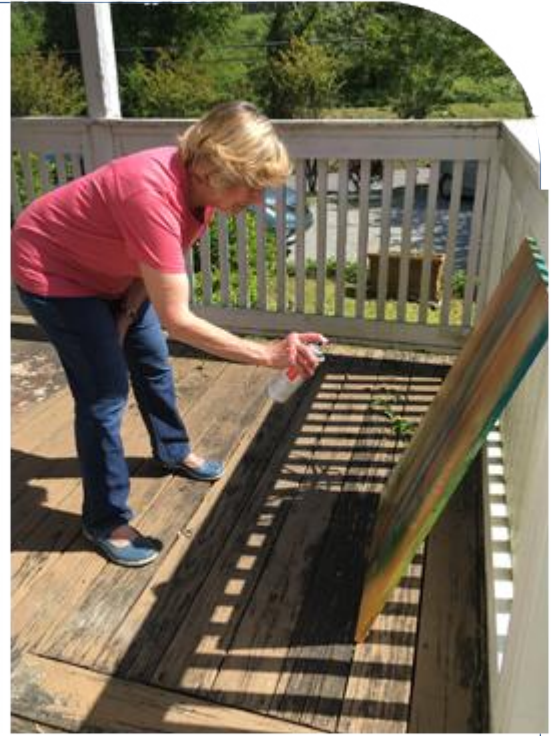
Inspired by Impressionist and Post-Impressionist painters like Paul Cézanne, Vincent Van Gogh and Henri Matisse, painter John Kelly Fitzpatrick (1888-1953) depicted rural Alabama's landscapes and way-of-life during the early 20th century. His subjects bask in the idyllic light of Regionalism and populism which he promoted as a mentor and teacher. Beloved throughout the South, and admired worldwide, his legacy and paintings continue to inspire a burgeoning art scene in Alabama and beyond.

Portrait of an Artist: **Genie Kline**

by June Carpenter

Born in Kansas, Genie Kline studied drama at the University of Kansas. She married an Air Force officer and spent 30 years as a “camp follower.” Over those years, their tours of duty included many places throughout the USA as well as 30 months in Okinawa, which she describes as “delightful.” While in Okinawa, she and her husband traveled extensively through Asia. During her travels, she became intrigued with art.

After their last move, retiring to a home in Wetumpka, she began attending The Kelly Gallery events. It was there, at a Kelly exhibit opening, that Genie met Cookie Knott and expressed her desire to take art lessons. That evening, Cookie introduced her to Wetumpka artist Hope Brannon and, at the age of 82, she began art lessons with Hope. Genie states that “it has been a fun-filled journey” over the past three years and she continues to enjoy it.



While in living in Okinawa and touring Asia, Genie became intrigued with art.



Crater Walk by Genie Kline

When asked what is most interesting to her, she replies, “I like the exploration of colors, playing with paints, seeing what colors mix, to splash them on a canvas and enjoy the experience of color.”



In 2018, *Independence Day* won Genie a First Place at Elmore County Art Guild’s exhibit “Tallassee Now & Then.”

Portrait of an Artist: Genie Kline continues . . .

Her medium of choice is acrylics because, she states, "it is easy to paint over and dries fast. I like using texture in the background to add interest. I am a messy painter; I use lots of paint, and consider myself a beginner." Genie has just begun to experience painting with oils, stating, "I try not to take my painting too seriously, just to relax and have fun with it. I like abstract painting, and I do spend time looking at pictures of other artists for inspiration."

Genie has paintings on display at The Kelly and with the Elmore County Art Guild. Some of her work has been exhibited at the Wetumpka Depot Theater and she, also, has entered paintings for judging.

She sums up her experience stating, "We are so fortunate in Elmore County to have the Elmore County Art Guild, the Dixie Art Colony, The Kelly and the interest they inspire for art."

"I like the exploration of colors, playing with paints, seeing what colors mix, to splash them on a canvas and enjoy the experience of color."



Genie Kline

"I am a messy painter; I use lots of paint."



Vanishing Shadows by Genie Kline



Spring by Genie Kline

THE KELLY *Caravan*

30 October 18

On the Road to Talladega

At the end of October, two carloads of intrepid Kelly travelers raced to Talladega under the leadership of Cookie Knott and Janice Howell. The destination was not the racetrack but the 1906 Jemison-Carnegie Heritage Hall, enough of art destination in itself with its dramatic windows, 18-foot ceilings and fine workmanship of the Beaux Arts Classic style, still elegant after more than a century. No longer a library, it's a museum and site for exemplary art exhibitions like that of the Wetumpka Garst Art duo, Deb and Steve.



The amazing building is a perfect location for their particular combination of realist and abstract art. Steve loves to paint realistic watercolor portraits. They aren't sitting like statues, but working and living and almost breathing. His nature paintings, frequently focusing on birds, are exquisite in detail as well. Deb is likewise drawn to birds and admits to having a great cache of feathers, some of which she incorporates into her multi-media paintings. She loves to explore colors, texture and expression in novel ways. Together, their two-person exhibit makes a delightful blend of opposites, especially as they encourage, galvanize and complement each other.



On The Mend by Steve Garst

See more at <http://garstart.com/>



Deb loves to explore colors, texture and expression in novel ways.

On the Road to Talladega continues . . .



Multi-media painting
by Deb Garst



Nature painting by Steve

After taking in the art and history, and stopping for a tasty lunch at a local diner on the town square, the Kelly group toured the 1936 Ritz Theater. There were many of this type movie theater in that era, but few that have been lovingly preserved. The one in Talladega has an added stage and has been resurrected for local theater and shows that reach to the children of every age as well as adults. From the lights to the seats to the precious art glass of the exterior, every restoration piece is selected with a conscious effort toward guardianship of Art Deco.

This one road trip incorporated an in-depth view of architectural treasures and outstanding art, a ride through the “Silk Stockings” district of Talladega, and even sandwiches and tea for a pleasant lunch break. Watch for more trips to come as The Kelly members go on the road to explore Alabama art.

Article by Libby Christensen



Talladega’s beautifully restored Art Deco Ritz Theater.

Dedicated Artist



Opening Reception’s *Guest of Honor*, Bobby Carr, admires his portrait painted by Steve Garst and titled *The Painter*. Dedicating the show to his mentor and friend, Steve said “He has touched so many lives.”



The Painter by Steve



Wetumpka art teacher, Bobby Carr, is an inspiration and mentor to generations of Wetumpka artists, including Steve and Deb. Steve’s portrait of his teacher was unveiled at the show’s Opening Reception on October 27th, when he and Deb officially dedicated their show to Mr. Carr.

“He has spent his career sharing his life through his own art, as well as sharing his knowledge with students of all ages,” said Steve. “Bobby has touched so many lives.”

Artists' Market and Membership Party

November 16 – 17
2018

Article by Barbara Davis

Membership Party

The Kelly ushered in the 2018 holiday season in true artistic fashion with an Artists' Market and Membership Party held November 16 – 17 at the museum. In addition to a preview and purchase opportunity on Friday evening, members were also treated to a festive cocktail buffet. Members also enjoyed some additional fun by participating in various 'gold cup' prize drawings.



Public Market

The Market was then open to the public on Saturday with the space filled with unique, handcrafted items which reflected a variety of artistic talents. Beautiful acrylics, watercolors, photographs, pottery, crocheted items, handmade clothing, jewelry, pillows, notecards, and even paintings on wood from Little Sam's Café presented opportunities for a special one of a kind purchase.



Sylvia McConnell Art Scholarship

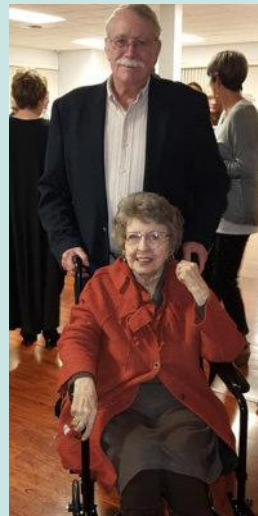
Sylvia has spent her life giving to her community and is a mentor to us all. - Carol Hickman

The highlight of the Friday evening party was the announcement of an art scholarship. KFMG President Carol Hickman revealed that the first *Sylvia McConnell Art Scholarship* will be awarded in 2019 to a graduating Elmore County High School senior who plans to study art. Carol shared a heartfelt story about how much Sylvia helped her daughter during her high school years. "Sylvia has spent her life giving to her community and is a mentor to us all," added Hickman.



President Hickman with Sylvia and Chick McConnell.

Sylvia, a retired Elmore County school teacher, genuinely cared for her students and had a positive influence on so many throughout her long teaching career. After her retirement she was instrumental in the formation of The Kelly. The scholarship will continue her positive impact on this community. Sylvia graciously expressed her sincere gratitude and appreciation.



The Kelly *Depot Event*

A "Divining" Evening
October 25, 2018

Article by Libby Christensen

In concert with The Wetumpka Depot Players, Kelly members spent a charming evening viewing the award-winning play *The Diviners*.

The evening included a table spread with delicious hors d'oeuvres, a silent auction, and a special production for the group. It ended with a delightful gift of designer cookies and notepad for each attendee.

The special performance helped the theater raise money and rehearse. The Kelly raised over \$2000 for the Kelly coffers as well with such awesome donations as paintings, a leather jacket, a mink scarf, and a weekend at Cookie Knott's lake cabin.



Janice Howell - Montgomery



Ron and Sunny Donaldson, Hazel Jones and Mabrey Whetstone



Matt and Erin Rogers - Wetumpka



Wanda Fontaine - Kowaliga



Sally Matthews - Equality



A “Divining” Evening continues . . .



Cast Members

Front Row: Terry Grant, Lee Borden

Back Row: Mathew Mitchell, Reese Lynch, Brad Sinclair, Adrian Lee Borden, Lauren Norris, Amanda Borden

The Diviners, a play set in a small town in the Great Depression, stars a mentally challenged youngster, who almost drowned as a small child and now has an ability to “divine” (find water using a hazel twig), and a disillusioned preacher who was just passing through but ends up staying. As they become friends, the warmth and humor of the town folk and the excellent acting really charms the audience.



A Special Production

What makes this production directed by Kim Mason really special is that to qualify for the Alabama Conference of Theatre’s Community Theatre Festival, all the stage and props must fit in a 10-ft box, which is to be assembled and disassembled within the 1-hr time frame of the entire production.

Watching the cast silently put together and break apart the jigsaw of the stage is poetry in motion. It is no wonder they made top awards as Best in Show, including Best in Lighting and three acting awards. They’ll next be competing at the Southeastern Theatre Conference in Knoxville, TN, in March 2019 as one of just two shows selected to represent Alabama, with our kudos.



Cast members take questions from the audience.





ThK Winter Events

Articles by CC Luck

JANUARY 15: COOKIE KNOTT'S STAGING *BROADER HORIZONS*



COOKIE KNOTT

BROADER HORIZONS COLLECTORS & CREATORS EXPLORING OUR WORLD



Faraway places. People who look strange and familiar at the same time. There's something about these scenes, these fellow human beings, that captures artists' attention and reverberates in their imagination. Their work transports us to new worlds. Our perspectives expand and multiply. This is what we will experience in The Kelly's upcoming exhibit, *Broader Horizons: Collectors and Creators Exploring Our World* (January 14 – April 25).



Like every other exhibit at The Kelly, *Broader Horizons* will look perfect. You will enter the main Riverview Gallery, your eyes travelling around the room in anticipation. The exhibit will hang together as a lovely, cohesive whole. It will beckon you in, inviting you to take a stroll and gaze at each individual work.



These exhibits, with their impressions of perfection, don't materialize by magic or chance. They take lots of work, beforehand and on the spot. Lots of volunteers must make myriad decisions, large and small. *Where can we place this piece to its best advantage? How about here? Or maybe the light is better for this piece over there? But won't it "fight" with the painting already hanging there? And where should we put this ceramic sculpture so you can see all sides, but not brush against it and break it? And so on... and on and on.*



Come broaden your horizons at Tuesdays With Kelly on January 15. The effervescent Cookie Knott will present a double feature: an overview of the spectacular *Broader Horizons* exhibit plus an exclusive behind-the-scenes look at how the show came together.



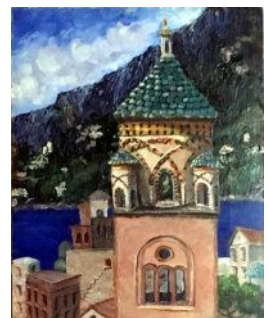
Lake Como by William Berra



Handmade Chinese silk rug



Overlooking the Kremlin by L J Christensen



Dreaming of Italy by CC Luck

February 19: AMY HIBBS and MELANIE EVANS

Maybe you remember Johnson Hardware in Eclectic—an old timey store chock full of every kind of hardware imaginable. Fast-forward to 2018 in the same location—to the transformation that is Bless Your Heart, artfully arranged with almost anything you might want to decorate a gorgeous home. Though Johnson Hardware exists only in our memory, Bless Your Heart owners, Amy Hibbs and Melanie Evans, have woven bits and pieces of the old store into their boutique—from the old nail bin to patches of brick on the walls.



Melanie (left) has 30 years experience as a florist.



Bless Your Heart began with the mother-and-daughter team chalkpainting furniture. They soon needed more space and three years ago settled on the old post office in Eclectic, halfway between their homes in Emerald Mountain and on Lake Martin. To their inventory of chalk painted furniture they added refurbished home décor items, which they discovered were more popular with customers than furniture. Bless Your Heart soon outgrew the old post office and has recently celebrated its first anniversary in the new location. The shop has now found its niche in French country and farmhouse décor, similar to that favored by Joanna Gaines in *Fixer Upper*. Bless Your Heart is thriving as it “experiments” with online sales and considers expanding into Prattville and Auburn.

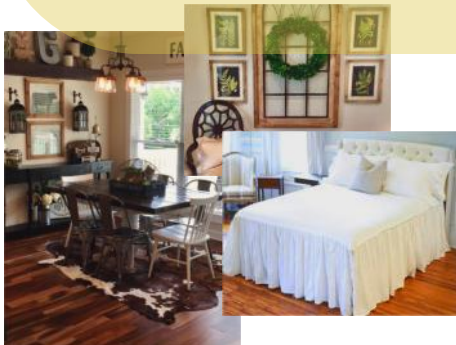
Central to Bless Your Heart’s decorating vision is floral arranging, a vision illuminated by Melanie’s 30 years working in florist shops. Of necessity, Amy and Melanie use artificial florals, but only high-end products, often silk. They insist on using colors that are “true” so their arrangements look “real and as close to nature as possible.” Bless Your Heart creates customized arrangements, sometimes in customers’ own treasured containers, for weddings, funerals, and other individual purposes—for example, beautifying someone’s mantle for spring.



As its name suggests, Bless Your Heart has a sweet spirit, as did the owner of Johnson

Hardware. When asked what Mr. Johnson would think of Bless Your Heart, his niece, Sylvia Worley, said he would be “tickled pink.” We think that you, too, will be tickled pink (and every other color in nature) at Tuesdays With Kelly on February 19—when mother-and-daughter duo, Melanie Evans and Amy Hibbs, demonstrate artful floral arranging.

Visit [Bless Your Heart](#) online.



“Art is my passion. It is central to everything I do.” So proclaims prolific painter—Dr. Arthur Bacon—on his website (artbaconartist.com). Yet, he is a



scientist, earning a B.S. in Biology from Talladega College and M.S. and Ph.D. degrees from Howard University. Returning to his undergraduate alma mater, he served on the faculty and also as Dean of Natural Sciences and Mathematics. He is credited with discovering a new species of protozoa.



Clearly, Dr. Arthur Bacon is a Renaissance man.

His artistic talent was recognized early, as he received numerous prizes and awards before graduating from high school. At Talladega College, while majoring in Biology, he took several art courses. Art might have remained a secondary interest, if he had not endured a particular formative event. During his senior year in college, Bacon suffered a severe beating for the offense of sitting in the “wrong” waiting room of a train station. This experience was to galvanize a fierce determination to excel at both art and science.



Excel he has. At his first professional art show, he won second prize and sold 30 paintings. His vibrant works have been exhibited in many cities, including New York, Washington, D.C., Birmingham, and Atlanta. On the long list of diverse individuals and institutions that own his vibrant paintings are the Mobile Museum of Art, Bill Cosby, the University of Maryland, U.S.



Congressman John Lewis, Opryland, the Birmingham Civil Rights Museum, Hank Aaron, and Fisk University. His brilliant bust of President Obama, *From Here to There*, is included in the anthology, *Visions of Our 44th President*.

Retired from academia, Dr. Bacon continues to create in his studio in Talladega—burnishing his credentials as a Renaissance man. Now added to his vocations of artist and scientist are those of poet and humanitarian. In 2014, Dr. Bacon was the recipient of the University of Alabama’s Realizing the Dream Mountain Top Award, which “recognizes those who provide vision, courage and leadership in improving the lives of others,”

according to Chris Norwood in *The Daily Home*.



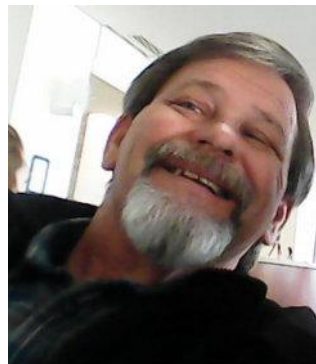
Please join us at Tuesdays With Kelly on March 19 when Alabama’s own Renaissance man—Dr. Arthur Bacon—will be the featured speaker. For a sneak peek at his vivid paintings, visit artbaconartist.com. Prepare to be dazzled!

THE KELLY Insider

WELCOME

Mitford Fontaine, Kelly Board of Directors.

Mitford Fontaine has joined The Kelly Board of Directors. 'Mit' and his wife Wanda have been very active Kelly members for years. Plus, he is a wonderful photo artist. His long experience with The Kelly and its other artists will prove invaluable, as one of the guiding hands in our organization's future.



Mitford Fontaine

Debbie Thomas, Administrative Assistant



Debbie Thomas

Debbie Thomas is The Kelly's new part-time Administrative Assistant. It is a newly created position designed to help handle our continued growth and expanding outreach. She will work for the Kelly part-time while continue working for her husband Kenny. They own Kenny's Automotive on Hwy 9 in Wetumpka.

Debbie says, "Thank you for this opportunity and the introduction. I look forward to meeting all the members of The Kelly and working together. "

THANK YOU



Our 2018 Sponsors



Recent Acquisition

This six-by-seven foot painting by Barbara Gallagher is on extended loan from the Freddie Lynn Family. We thank the Lynns for their generosity and support.